



AUTOATLANTA

PARTS WHOLESale LIST

ORDER DESK:
800-792-4944

AUTOMOBILE ATLANTA

PORSCHE EXPERTS

505 South MARIETTA PKWY
MARIETTA, GA 30060
Phone: (770) 427-2844
Phone: 800-792-4944
Fax: (770) 424-6833

Also visit:
WWW.AUTOMOBILEATLANTA.COM
FOR A WIDE SELECTION OF WHOLESale
PARTS FOR EVERY VEHICLE

Copyright© 2003 2004 All rights reserved including the right of reproduction in whole or in any part without permission from the publisher.

ORDER INFORMATION

- We ship Federal Express Ground whenever possible. To insure prompt delivery, please provide your complete address. FE will not deliver to P.O. boxes.
- For other carriers, freight deliveries or international orders, please call for exact shipping and handling charges.
- All international orders will vary with destination and size of order.
- Shipments outside the USA may be subject to import charges. Such charges are the responsibility of the customer.
- Next day air delivery is avail through Federal Express or U.S. Mail. (Please call for exact prices)
- 2nd day air delivery is avail through Federal Express. Express charges apply.
- Saturday delivery is avail through Federal Express, or U.S. Mail. An additional charge will apply.
- Hawaii, Alaska and Puerto Rico deliveries incur extra shipping charges.
- Oversized and freight items are individually quoted and the rates listed do not apply.
- All C.O.D. orders must have a credit card to back-up all shipping charges. A C.O.D. fee of \$8.00 will be charged.
- Refused C.O.D. orders will be charged for shipping, C.O.D. fee, as well as a 20% restocking fee on the parts unless canceled prior to 4 p.m. on the day of shipment.

Shipping and handling charges via Federal Express:

| Merchandise Subtotal | East of the Mississippi | West of the Mississippi | Canada |
|-----------------------|-------------------------|-------------------------|----------------|
| avail - 25.00 | avail | avail | avail |
| 25.01 - 40.00 | avail | avail | avail |
| 40.01 - 75.00 | avail | avail | avail |
| 75.01 - 100.00 | avail | avail | avail |
| 100.01 - 150.00 | avail | avail | avail |
| 150.01 - 200.00 | avail | avail | avail |
| 200.01 & UP | avail | avail | avail |
| 2nd Day Delivery add | avail | avail* | Not Avail |
| Next Day Delivery add | avail | avail* | Call for Quote |

Federal Express charges by dimensional weight on all shipments.
—SHIPPING HEAVY OR BULKY ITEMS—
 Please call for charges. These items may require delivery by common carrier or be subject to oversize rates.



Returns & Exchanges:

Damaged Goods:

If there is any damage to any of the products in your order, please contact the delivering carrier at once. Keep the shipping carton and all packing material. Automobile Atlanta cannot initiate the claim with the carrier. The carrier will only deal with the recipient of the goods. Once you have a claim number, call us for a replacement part.

Should you find it necessary to return an item:

Please contact your personal salesman (listed on your invoice) for a return authorization number, at 770-427-2844. (Our shipping department will refuse any unauthorized return.) Please enclose a copy of your invoice, wrap the item securely and send your package back to us via insured and prepaid shipping. International customers are responsible for customs on returned items. SHIPPING AND HANDLING FEES ARE NOT REFUNDABLE!

Customer Service and Order Inquiries:

Write:

AUTOMOBILE ATLANTA/Customer Service
 505 South Marietta Parkway • Marietta, Georgia 30060
 Please include your phone number so that we may respond quickly.

Email Us:

You may email us at customerservice@autoatlanta.com

Phone Us:

You may call us at (770) 427-2844 ext.10; Fax us at (770) 424-6833. We will be happy to answer your questions Monday-Friday 10 A.M.-4 P.M. EST. (No collect calls) Have your invoice avail for faster service.



914 OIL BAFFLE PLATE SEAL

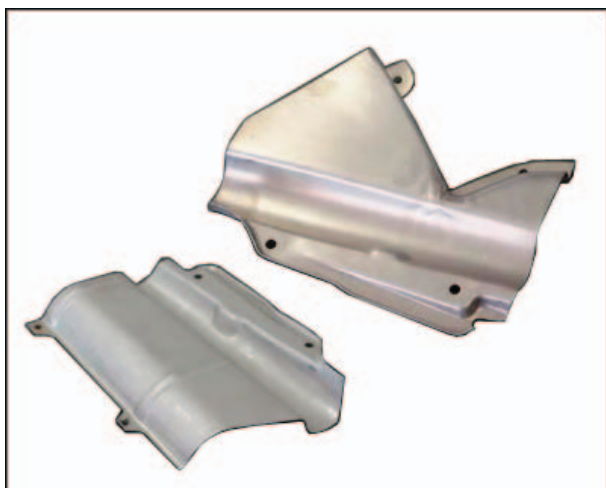
No 914 engine can be rebuilt without four of these! Discontinued by the factory, this high temp seal is an exact reproduction but rated for a higher temperature! Four required

**PN: B022 101 559 ... MSRP: \$7.50
WHOLESALE: 20: \$4.50 EA.**

TIMING HOLE PLUG

Long discontinued by the factory, this exact reproduction screws perfectly into the impellor housing and plugs a large hole and is vital to increasing airflow.

**PN: B021 119 233 A ... MSRP: \$19.50
WHOLESALE: 10: \$90.00**



914 LEFT AIR GUIDE PLATE 1973-74

This critical and no longer available factory part guides the cooling air between the heat exchanger and engine case as well as shielding the pushrod tubes from damage. This part fits all 1973-74 914 models as well as all of the aftermarket stainless heat exchangers and any 1970-74 model 914 converted to the later style shift linkage.

**PN: B022 119 356 A ... MSRP: \$63.80
WHOLESALE: 10: \$250.00**

914 LEFT AIR GUIDE PLATE 1975-76

This critical and no longer available part guides the cooling air between the heat exchanger and engine case as well as shielding the pushrod tubes from damage. This part fits all 1975-76 914 models with factory heat exchangers.

**PN: B039 119 353
MSRP: \$63.80 EA. ... WHOLESALE: 10: \$250.00**



FUEL INJECTOR ELBOW

The perfect curve! Ever try to connect the 914 fuel injector to the fuel rail with regular hose? You know that pinched ragged hose pieces just don't cut it (so to speak!). These beautifully curved reproductions exactly replace the line while providing great ease of installation.

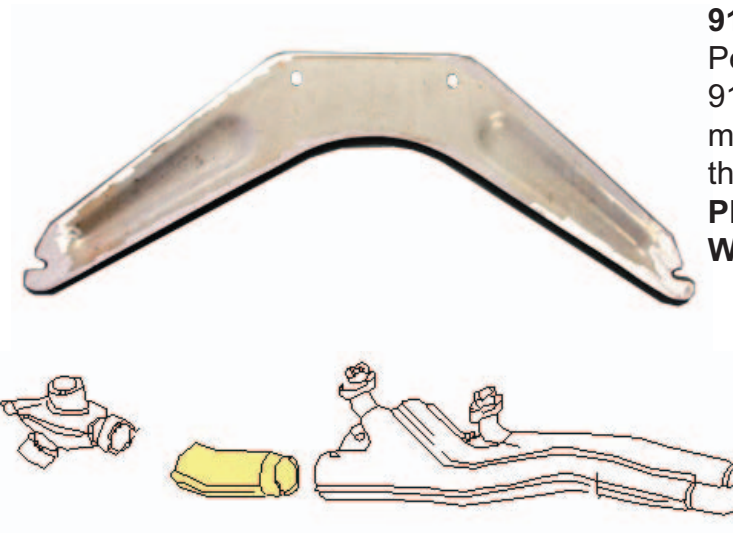
**PN: B043 133 387 ... MSRP: \$9.50
WHOLESALE: 16: \$100.00**



914 1.7 & 1.8 MUFFLER BRACKET

Perfect reproduction of the original 1970-74 914 1.7 and 1.8 muller bracket, long discontinued by the factory. This part is critical in supporting the heat exchangers and mufflers.

**PN: B021 251 067 A / MSRP: \$43.45
WHOLESALE: 10: \$210.00**



914 2.0 914/6 MUFFLER BRACKET

Perfect reproduction of the original 1970-72 914/6 and 1973-73 2.0 discontinued factory muller bracket. This part is critical in supporting the heat exchangers and mufflers.

**PN: B039 251 067 / MSRP: \$43.45
WHOLESALE: 10: \$210.00**

914 WARM AIR ELBOW

Super heavy gauge replacement for the flimsy heat exchanger to control valve connector pipe. Beautifully powder coated. Will never rust again!

**PN: B022 256 121 / MSRP: \$30.80
WHOLESALE: 10: \$190.00**





914 HEATER BLOWER UPDATE KIT

Solves the meager heat supply delivered by the single 1973-75 heater blower. Branch exactly duplicates the long discontinued factory part and blower hose kit is stronger than the original.

PN: BMIS 400 / MSRP: \$38.50

WHOLESALE: 10: \$220.00

914 FUEL PUMP RELOCATION KIT

As approved by the factory engineers! Kit is complete with precise installation instructions and everything the home hobbyist needs to permanently solve the vapor lock problem on all 1970-74 914s!

PN: BAA 007 / MSRP: \$49.50

WHOLESALE: 10: \$390.00



10mm



8mm

914 REAR CALIPER ADJUSTER OUTER

Crucial piece to adjust the 914 caliper, never available as a separate part, and no caliper rebuild kit has this one in it! Please specify 8mm/8mm size or 8mm/10mm size

8MM ... PN: B914 352 423 B / MSRP: \$27.50/EA

8MM ... WHOLESALE: 10: \$180.00

10MM ... PN: B914 352 423 D / MSRP: \$27.50/EA

10MM ... WHOLESALE: 10: \$180.00



914 REAR CALIPER ADJUSTER INNER

This item is always missing from the rear caliper, rendering it unadjustable! Longer than required for a lifetime of wear.

PN: B914 352 423 A ... MSRP: \$27.50

WHOLESALE: 10: \$125.00



STYLED STEEL WHEEL CENTER CAP

Standard equipment for all 74-76 914s, we could not believe that the Porsche factory discontinued these!

**PN: B914 361 305 00 ... MSRP: \$9.50
WHOLESALE: 8: \$44.00**



REAR SHIFT COVER 1973-76 914

The factory got too expensive on us, so we reprod this part. Exact copy made of the highest quality automotive plastic. Keep the grease in and protect the shift linkage from wearout!

**PN: BPCG 424 501 01 ... MSRP: \$50.00
WHOLESALE: 10: \$220.00 EA.**



REAR SHIFT COVER 1970-72 914

Long discontinued by the factory these excellent reproductions solve a nagging problem and save the wear to the linkage.

**914-4 PN: BPCG 424 501 00 ... MSRP: \$40.00
WHOLESALE: 6: \$150.00
914-6 PN: B914 424 206 00 ... MSRP: \$45.00
WHOLESALE: 6: \$174.00**

FRONT SHIFT COVER BAND

Fitting all 1970-72 914/4 and 914/6 models, this is the part that firmly secures the front oval shift cover to the firewall. We are in the process of making the remaining early (but discontinued) boots and covers in the very near future.

**PN: B914 424 502 00 ... MSRP: \$19.50
WHOLESALE: 5: \$60.00**

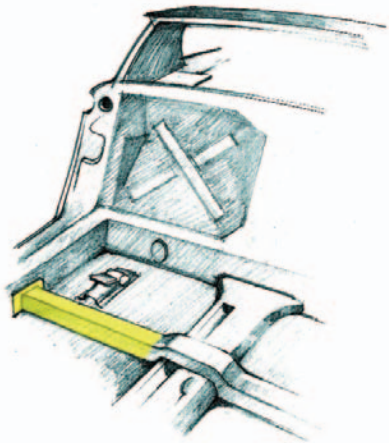


EARLY REAR SHIFT COVER BOOT

Beautiful reproduction in original rubber, unlike the interim + discontinued ill fitting factory vinyl piece!

**PN: B914 424 429 700 ... MSRP: \$29.50
WHOLESALE: 10: 150.00**





FRONT CROSS MEMBER

The piece that fits just under the front of the two seats and reinforces the floor board. This part rusts from the bottom up. Discontinued by the factory in 2005 this exact repro is a perfect fit of compound curves and stampings.

PN: B914 501 109 10 - LEFT

PN: B914 501 110 10 - RIGHT

**MSRP: \$110.00 ... WHOLESALE: 4: \$240.00
(PER SIDE)**

914 INNER FIREWALL REPAIR

Replaces just the area that rusts avoiding purchase of the expensive and rare factory piece. Sold per side

PN: B914 501 643 15 ... LEFT SIDE

MSRP: \$104.50 ... 10 / \$600.00

PN: B914 501 644 15 ... RIGHT SIDE

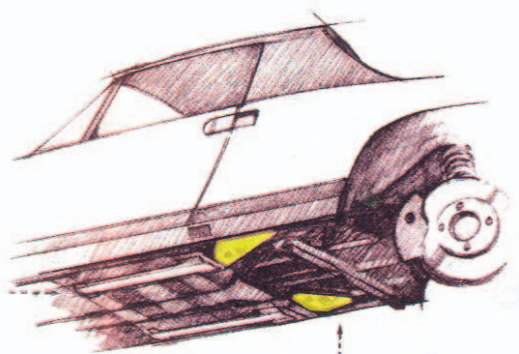
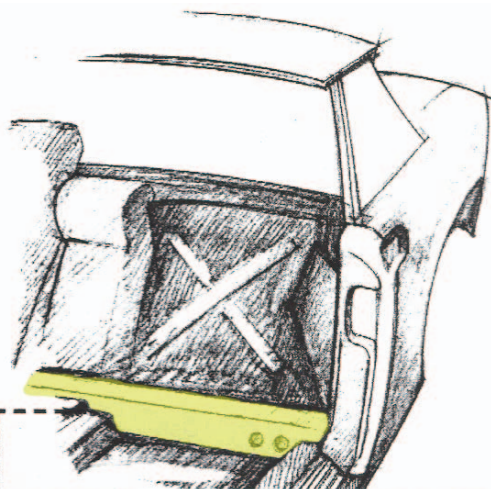
MSRP: \$104.50 ... 10 / \$600.00

JACKING DONUT

There are four of them on the 914 floor pan. They provide great support for jacking and/or jackstands. Easily spot welded in.

PN: B914 507 041 AA

MSRP: \$38.50 ... WHOLESALE: 10: \$150.00



914 FLOOR PAN JACKING TRIANGLE

The factory forgot about this one! Never in the parts book or with the floor pan replacement part, this is where the jackstand should be placed! Direly needed for any restoration

PN: B914 507 042 10

MSRP: \$82.50 ... WHOLESALE: 10: \$550.00

PN: B914 507 041 10

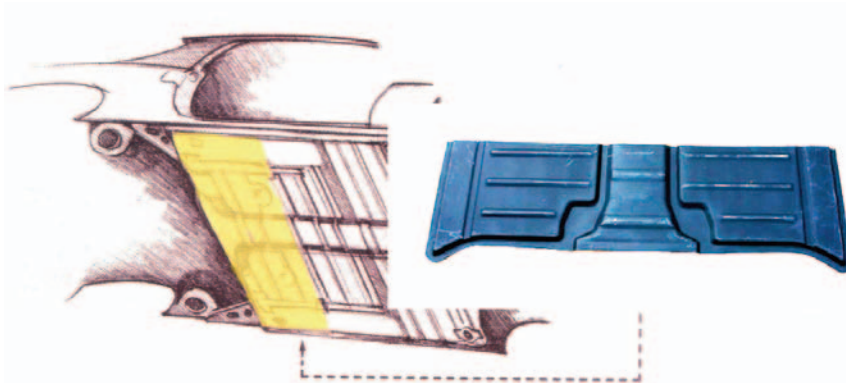
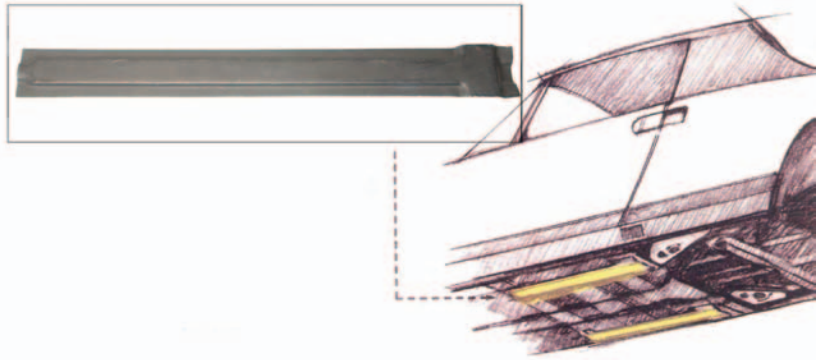
MSRP: \$82.50 ... WHOLESALE: 10: \$550.00

914 SEAT HINGE REINFORCEMENT

Keeps the seat mount from flexing, and a critical piece needed for proper floorpan installation. Never available separately from the factory!

PN: B914 501 943 00

MSRP: \$27.50 ... WHOLESALE: 10: \$150.00



914 FLOOR PAN PATCH

This is perfect to repair the area where the battery or rear window has leaked. Fits from the rear fire-wall to just in front of the floor pan hinges.

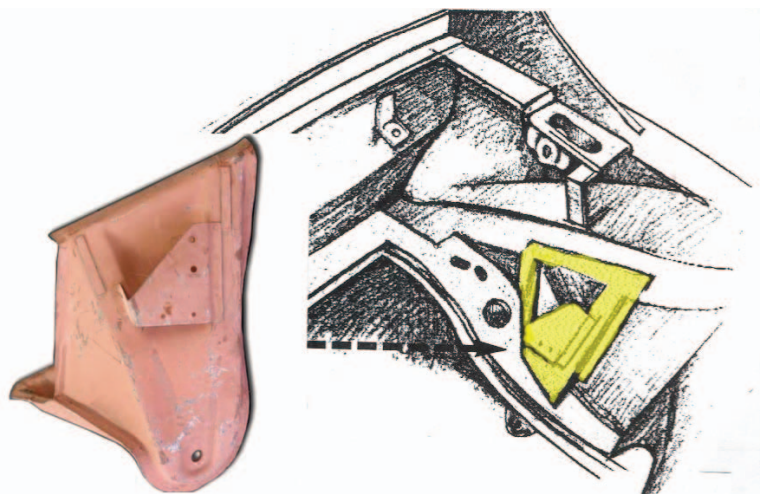
PN: B914 501 939 25 / MSRP: \$110.00

WHOLESALE: 10: \$750.00

RIGHT REAR SUSPENSION CONSOLE

The right rear suspension console is a perfect repair for the often broken rear inner swing arm mount. Easily welded in with the engine removed, it restores strength to this critical area. It is a perfect match to our engine shelf! Order the engine shelf below.

**PN: B914 501 044 A ... MSRP: \$192.50
WHOLESALE: 10: \$1250.00**



914 ENGINE LID HINGE BRACKET

Never available from the factory as a separate piece, this bracket often cracks prohibiting engine lid adjustment.

PN: B914 502 011 20

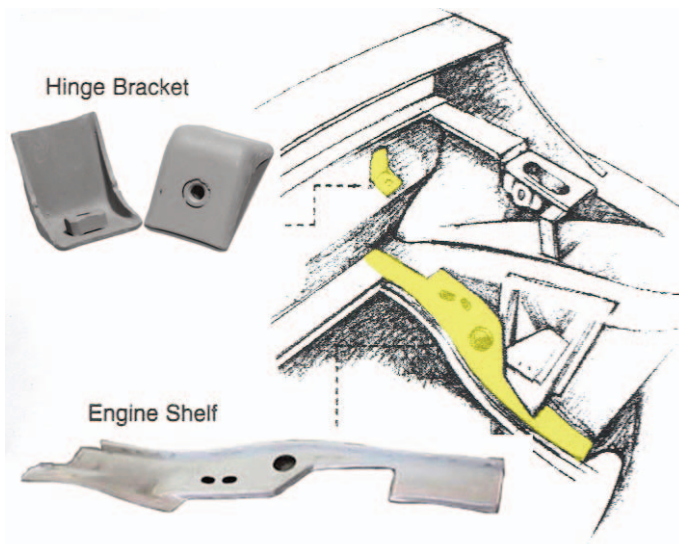
MSRP: \$28.05 ... WHOLESALE: 10: \$180.00

914 ENGINE SHELF

Always rusted away from battery damage, this critical piece holds the engine bay seal as well as routing the two fuel lines up into the engine compartment. Easily welded in

PN: B914 501 436 12

MSRP: \$192.50 ... WHOLESALE: 10: \$1000.00



RIGHT LONGITUDINAL REPLACEMENT

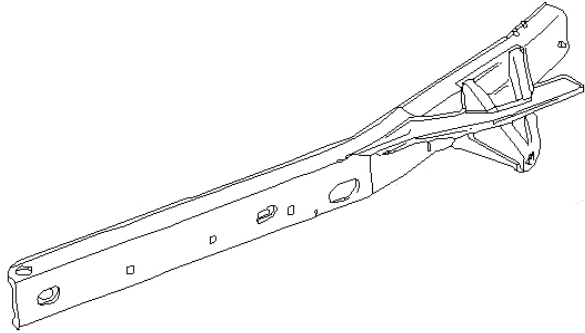
This is made in two pieces for easy installation. Part A replaces the section from the front of the car to the rear of the door and is the part covered with the rocker carpet. Part includes the seat belt mount. Part B replaces the frame under the battery and also holds the engine mount and suspension console as well as the rear hinge spring. These parts are the strength of the chassis and are the primary reason for sag. Porsche last sold the factory variety of this for over \$2,500.

PN: B914 501 434 10 A

**MSRP: \$302.50 ... WHOLESALE: 10:
\$1750.00**

PN: B914 501 434 10 B

**MSRP: \$302.50 ... WHOLESALE: 10:
\$1750.00**



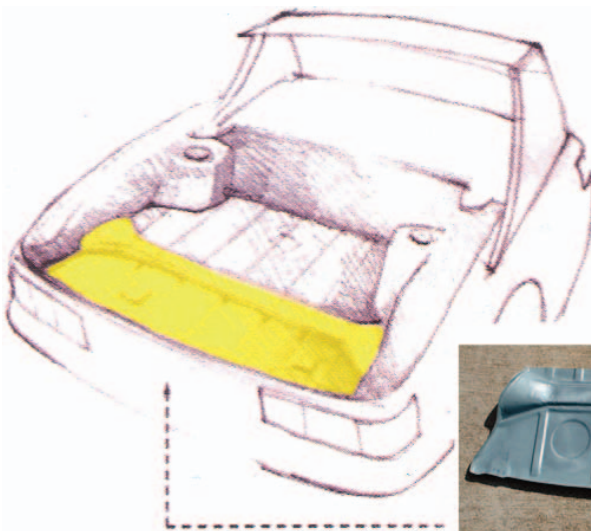
Longitudinal kit replaces this part with two handy sections

EMERGENCY BRAKE PIVOT STAND

Just pulled up on the 914 emergency brake handle and it broke off in your hand? The pivot stand has rusted away! Years of a hardtop side seal leak directly onto this complex part has caused the problem. Discontinued by the factory in 2001 this identical part is an easy installation after simply sliding out the drivers seat and removing the seat rack and rocker carpet.

PN: B914 501 075 10 ... MSRP: \$65.00

WHOLESALE: 6: \$230.00



REAR TRUNK FLOOR

Replaces the rear portion of the 914 trunk floor, rusted out from leaking taillight bodies.

PN: B914 501 083 20 ... MSRP: \$192.50

WHOLESALE: 10: \$1100.00



REAR ENGINE BAY SEAL

Great repro of the long discontinued factory part, this is the seal that fits at the back of the engine bay in the half circle configuration.

PN: B914 512 317 10 ... MSRP: \$38.50

WHOLESALE: 10: \$250.00





REAR DECK HINGE PIVOT

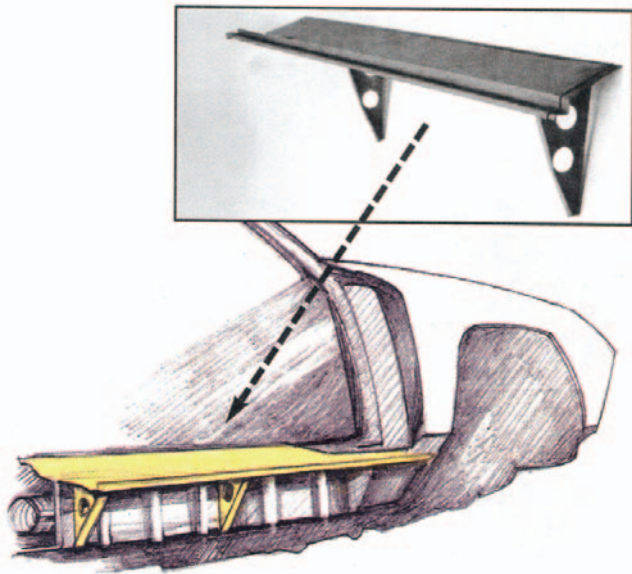
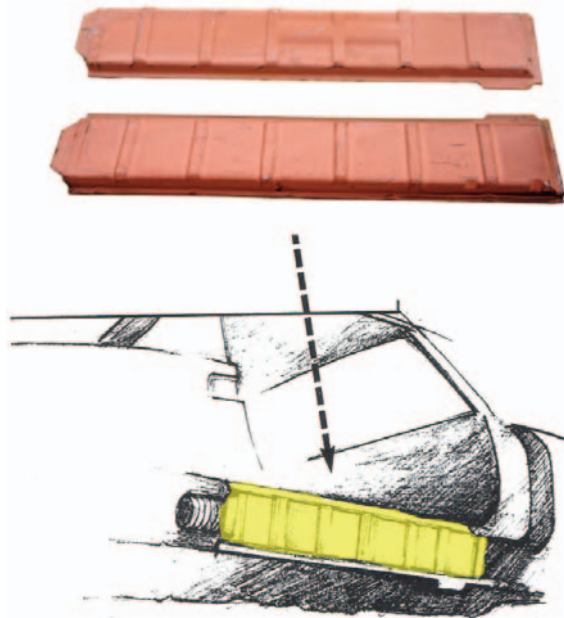
Is your rear deck high on one front corner? You have broken the hinge pivot for lack of lubrication to the shoulder bolt! These are easily welded in once you relieve the spring pressure on the hinge roller!

**PN: B914 501 030 10 ... MSRP: \$24.20
WHOLESALE: 10: \$140.00**

INNER ROCKER

When the inner rocker rusts, the 914 sags. Welding in a new one restores the strength to the frame and saves your 914.

**LEFT INNER ROCKER ... B914 501 013 10
MSRP: \$121.00 ... WHOLESALE: 10: \$750.00
RIGHT INNER ROCKER ... B914 501 014 10
MSRP: \$121.00 ... WHOLESALE: 10: \$750.00**



SILL THRESHOLD PLATES

If you notice bubbling at the back of the threshold plate where it meets the rear quarter panel, the sill is rusted. If you remove the brushed aluminum or black plastic threshold, you will probably see additional damage. Our sill completely solves the problem and is easily welded in.

**PN: LEFT SILL PLATE - B914 501 089 10
MSRP: \$93.50 ... WHOLESALE: 10: \$650.00
PN: RIGHT SILL PLATE - B914 501 090 10
MSRP: \$93.50 ... WHOLESALE: 10: \$650.00
PN: SILL TRIANGLE ONLY (INCLUDED WITH SILL PLATE) - B914 501 000 10
MSRP: \$16.50 ... WHOLESALE: 10: \$95.00**

REAR TRUNK HINGE BOLT

This is the shoulder bolt on which the trunk hinge pivots. Four required per car. Make sure you periodically lubricate these bolts to keep the trunk hinge brackets from breaking.

**PN: B914 512 191 10 ... MSRP: \$9.90
WHOLESALE: 10: \$50.00**





911 INNER ROCKER

When the inner rocker rusts, the 911 sags. Welding in a new one restores the strength to the frame and saves your 911.

LEFT INNER ROCKER ... B911 501 123 01

MSRP: \$75.00 ... WHOLESALE: 10: \$450.00

RIGHT INNER ROCKER ... B911 501 124 00

MSRP: \$75.00 ... WHOLESALE: 10: \$450.00



911 OUTER ROCKER

Outer rocker panel.

UP TO 1968:

LEFT OUTER ROCKER ... B911 503 401 20 ... MSRP: \$69.50 ... WHOLESALE: 10: \$420.00

RIGHT OUTER ROCKER ... B911 503 402 20 ... MSRP: \$69.50 ... WHOLESALE: 10: \$420.00

1969 AND UP:

LEFT OUTER ROCKER ... B911 503 401 00 ... MSRP: \$69.50

WHOLESALE: 10: \$450

RIGHT OUTER ROCKER ... B911 503 402 00 ... MSRP: \$69.50

WHOLESALE: 10: \$450

914 JACK POST & SUPPORT

The jack post and support completes your frame restoration and restores use of the factory jack. They are easily welded in!

SUPPORT PN: B914 501 151 10 ... MSRP: \$19.50 ... WHOLESALE:

10: \$95.00

POST PN: B914 501 153 10 ... MSRP: \$22.00 ... WHOLESALE: 10:

\$115.00



911 JACK POST & SUPPORT:

SUPPORT PN: B901 501 151 22 ... MSRP: \$27.50

WHOLESALE: 10: \$115.00

POST PN: B901 501 153 21 ... MSRP: \$27.50 WHOLE-

SALE: 10: \$85.00



914 FENDER TO COWL SEAL

Keeps this joint from rusting. Often painted over by rough handed bodymen, these are so easily replaced you wonder why they were not removed before the repaint!

PN: B914 559 155 10 ... MSRP: \$2.20

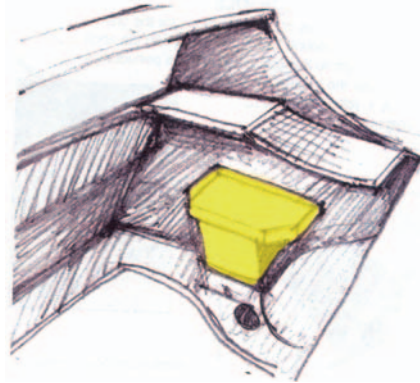
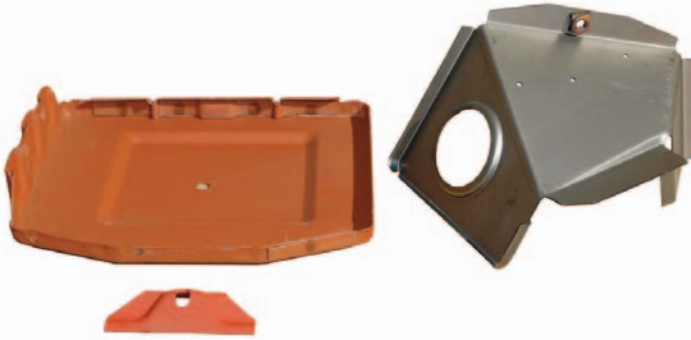
WHOLESALE: 10: \$15.00



914 STEEL FLARE SET

Beautiful precise reproductions of the expensive 916/914-6 GT factory flares. Designed from the old perfect originals, these are a great fit and easily installed. Convert the mild mannered 914 to the aggressive wide bodies 914-6 GT. Sold as a set only.

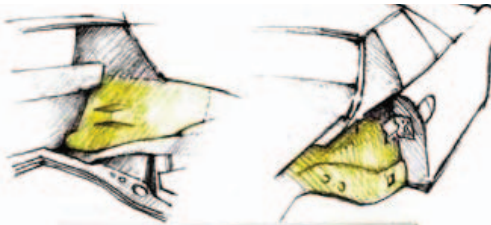
**PN: B914 503 908 GT ... MSRP: \$950.00
WHOLESALE: 6 SETS: \$3900.00**



BATTERY TRAY, SUPPORT, CLAMP

914's have suffered from battery damage for years and hence all eventually need new tray + supports. Easily welded in these exact duplicates of the expensive factory parts are a high quality alternative.

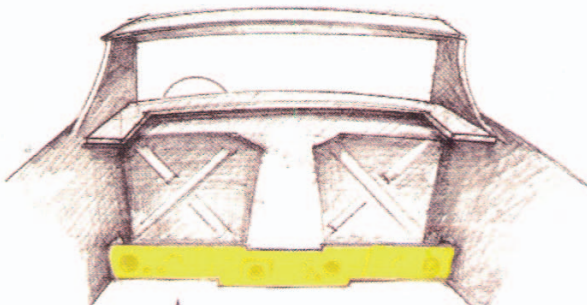
**PN: CLAMP - B914 611 233 10 ... MSRP: \$8.25 ... WHOLESALE: 10: \$50.00
PN: SUPPORT - B914 501 073 10 ... MSRP: \$26.95 ... WHOLESALE: 10: \$180.00
PN: TRAY - B914 501 587 10 ... MSRP: \$55.00 ... WHOLESALE: 10: \$250.00**



RIGHT INNER WHEELHOUSE REPAIR

This neat part quickly and easily repairs the area directly behind the battery tray and under the jack post and is complete with a factory reinforcement panel.

**PN: B914 501 944 20 A ... MSRP: \$175.00
WHOLESALE: 10: \$1250.00**

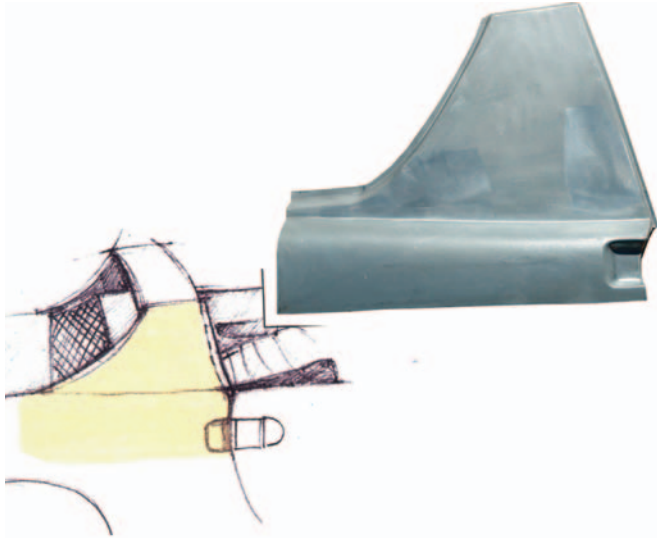


OUTER FIREWALL REPAIR

Replaces the lower most portion of the outer firewall where it attaches to the floor pan and, in addition, provides new steel around the often ripped clutch tube area.

**PN: B914 501 119 20 ... MSRP: \$155.00
WHOLESALE: 10: \$1000.00**





QUARTER PANEL SAIL REPLACEMENT

Bubbling under the side vinyl is caused by body rot. Originally the only way to solve this was to replace the quarter panel! To make the job simple we made a patch panel. It is large enough to solve any rust problem in the area and welds in easily!

LEFT ... B914 503 943 10 / MSRP: \$137.50

WHOLESALE: 10: \$950.00

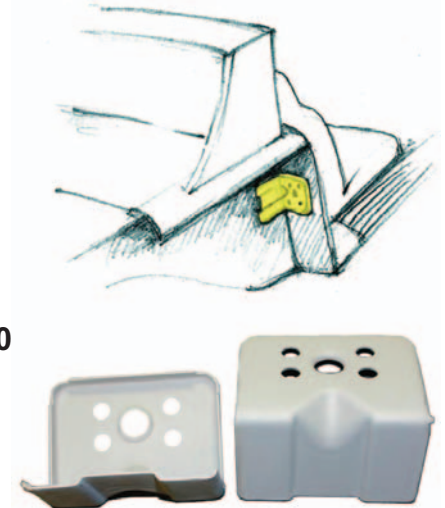
RIGHT ... B914 503 944 10 / MSRP: \$137.50

WHOLESALE: 10: \$950.00

DOOR CATCH REINFORCEMENT

Rusts out with the door jamb and most early 914 models did not even have this part installed!

PN: B914 503 903 DC / MSRP: \$27.50 WHOLESALE: 6: \$90.00



FIBERGLASS ROCKER PANEL SET

These are perfect reproductions of the original parts from our own great molds.

PN: RMIT 1431 ... MSRP \$121.00/SET ... WHOLESALE: 5 SETS / \$400.00

STEEL ROCKER PANELS

For those that must have as close to the original as possible, these steel pieces are perfect reproductions of the originals.

PN: B914 503 125 10, LEFT STEEL ... MSRP: \$165.00 ... WHOLESALE: 6: \$600.00

PN: B914 503 126 10, RIGHT STEEL ... MSRP: \$165.00 ... WHOLESALE: 6: \$600.00



914 FRONT STOCK-STYLE FIBERGLASS BUMPER

Identical to the original 1970-74 914 in look, our bumper includes the topseal in repro as well. Perfect for racing or for the 914 owner wanting to save hundreds on the stock replacement, this bumper is from our own molds for a precise fit.

PN: RMIT 1409 ... MSRP: \$275.00

WHOLESALE: 4: \$800.00



914 SPECIAL EDITION/LIMITED EDITION SPOILER

This near perfect part created from our own precise molds exactly duplicates the expensive \$400 factory original in fiberglass.

PN: B914 503 235 10

MSRP: \$98.00 ... WHOLESALE: 10: \$750.00

914 REAR 916 TYPE BUMPER

Very much like the original fiberglass bumper but modified for easy clearance of the muffler tail pipe, this piece is a perfect fit as it is taken from our precise molds.

(Actual bumper may vary from picture)

PN: RMIT 1408 ... MSRP: \$269.50

WHOLESALE: 4: \$800.00



944 FRONT SPOILER

Made in polyurethane from our precise mold, this spoiler exactly duplicates the expensive factory variety but is reinforced in the areas prone to breakage. It is also high flexible and easily installed by the home hobbyist. Great way to sell a set of driving lights and side markers. Ready to prep and paint.

PN: B931 505 371 04 ... MSRP: \$495.00

WHOLESALE: 10: \$2500.00

914 FRONT HOOD SEAL

Excellent reproduction with molded ends for a perfect fit.

**PN: B914 511 901 10 ... MSRP: \$59.50
WHOLESALE: 10: \$400.00**



914 REAR TRUNK SEAL

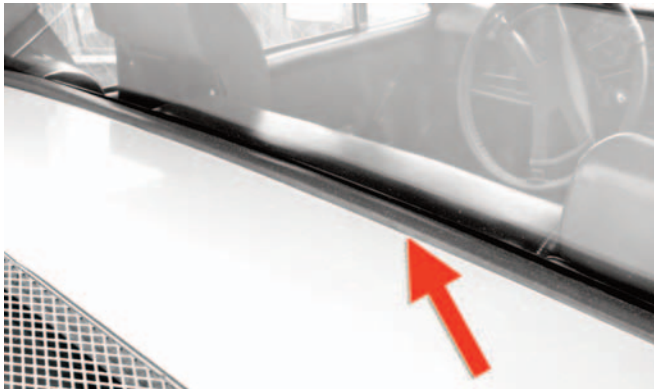
This excellent reproduction is just like the factory with an embedded steel grip for a perfect seal.

**PN: B914 512 317 10
MSRP: \$29.50 ... WHOLESALE: 10: \$250.00**

914 REAR LID TO GLASS SEAL

Seal the water! Easily installed seal fits against the rear window and buffers the engine lid. The factory or replacement part clips on via the metal strip imbedded in the seal. The reproduction part glues on with some weatherstrip adhesive.

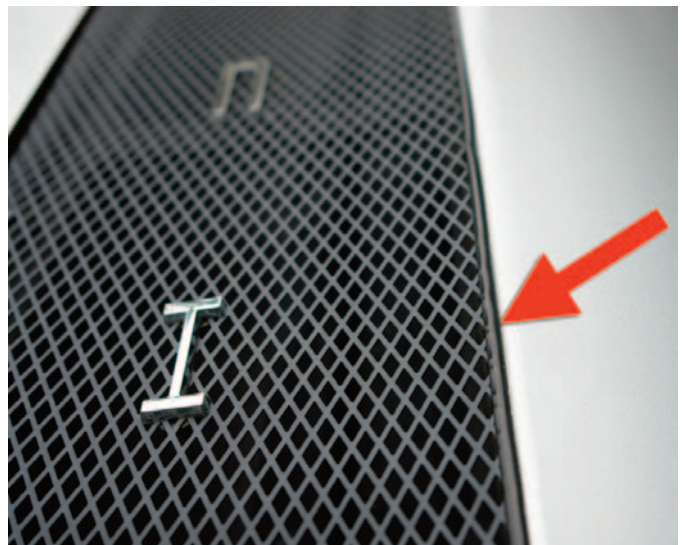
**PN: B914 512 319 10
MSRP: \$39.50
WHOLESALE: 10: \$200.00**



914 ENGINE GRILLE TO ENGINE LID WELTING

Discontinued by the factory, this one piece seal is supplied extra long to replace the welting on both side grilles as well.

**PN: B914 504 105 10 ... MSRP: \$13.20/EACH
WHOLESALE: 10: \$75.00**



ENGINE LID DRIP PAN

Finally! A quality reproduction engine lid drip pan to replace the long discontinued factory part. This late style reproduction fits all 70-76 914/4 models and protects the fuel injection from damage.

**PN: B914 512 189 10
MSRP: \$125.00
WHOLESALE: 6: \$540.00**





914 TRUNK LATCH CAM

If this part breaks, the trunk will not open! Not available separately from the new \$300+ rear trunk lock assembly, made of Nylon Eleven and guaranteed for the life of the original owner's car.
PN: B914 511 052 00
MSRP: \$13.20 EA. ... WHOLESALE: 50: \$250.00

914 TRUNK LOCK SEAL

No longer available from the factory, Automobile Atlanta took upon ourselves to remake this much needed seal. Great reproduction for concours restorations and just a replacement as these seals always seem to suffer from overspray.

PN: B914 512 193 10 ... MSRP: \$8.80 EA.
WHOLESALE: 10: \$40.00

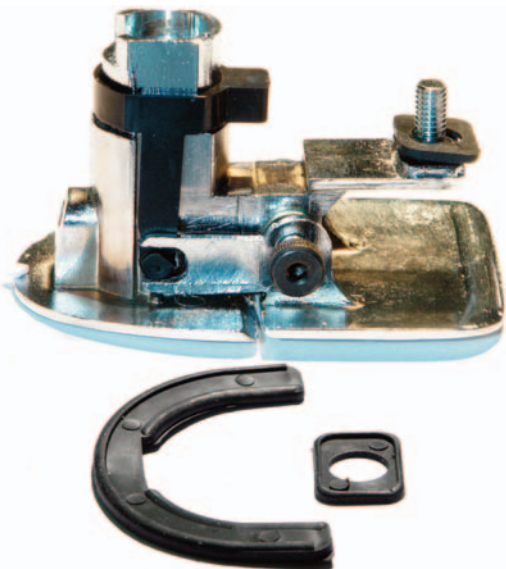


914 DOOR SQUEEGE SCRAPER

This critical seal squeezes the water off the door glass each time it is rolled up or down.

PN: B914 531 873 10, LEFT
MSRP: \$6.60 ... WHOLESALE: 10: \$40.00

PN: B914 531 874 10, RIGHT
MSRP: \$6.60 ... WHOLESALE: 10: \$40.00

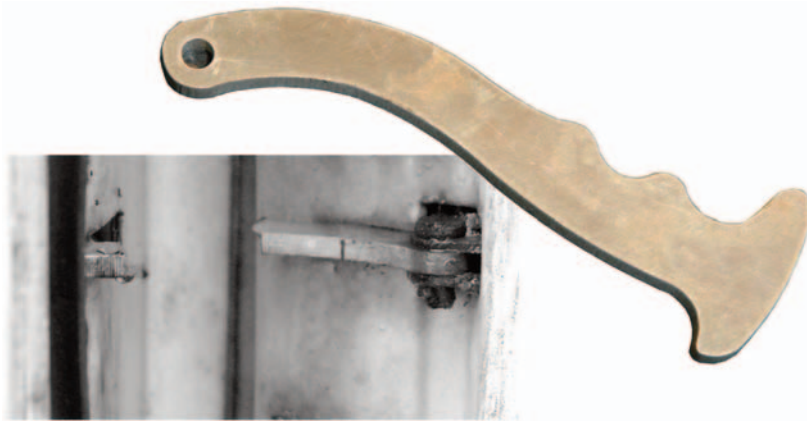


914 LARGE OR SMALL DOOR LATCH SEALS

Made of nylonized rubber, this seal will never shrink or split.

PN: B914 531 601 10, LARGE / MSRP: \$4.50
WHOLESALE: 10: \$30.00

PN: B914 531 603 10, SMALL / MSRP: \$4.50
WHOLESALE: 10: \$30.00



DOOR STRAP REPLACEMENT

Even though the factory used to sell the whole unit, it was usually just the strap itself that broke. This exact laser cut aluminum replacement is an easy and inexpensive fix for this no longer available part. We also offer the spring and roller kit!

**PN: B914 531 037 A ... MSRP: \$19.25
WHOLESALE: 10: \$110.00**



DOOR SEAL ON DOOR

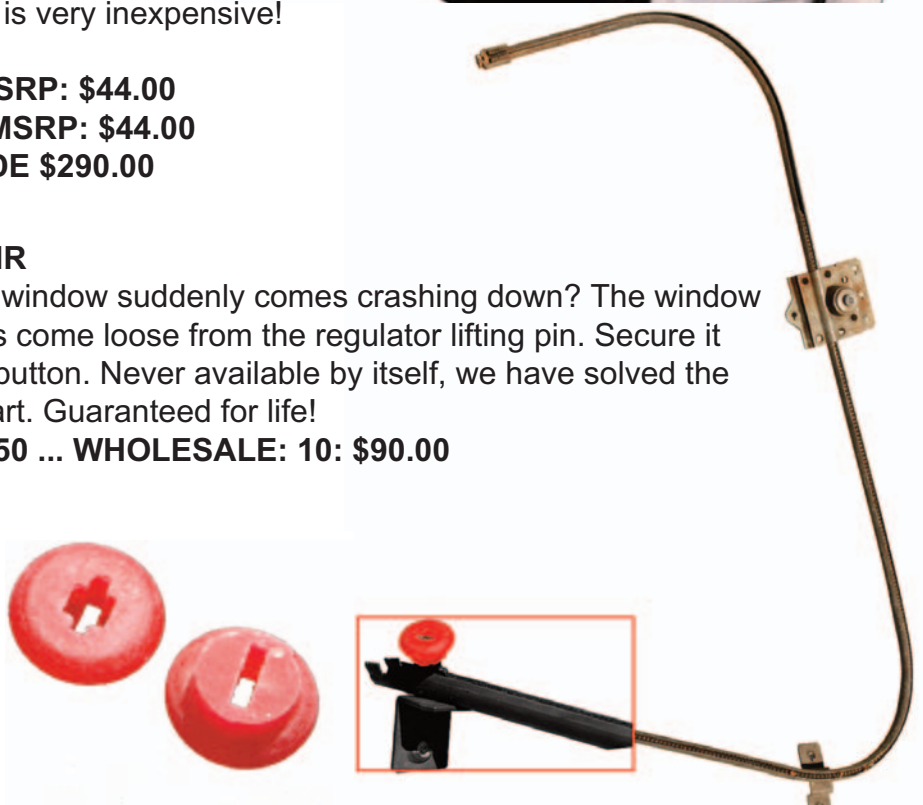
Great item! These 914 door seals are very expensive and our exact replacement is very inexpensive! Powdered for easy installation.

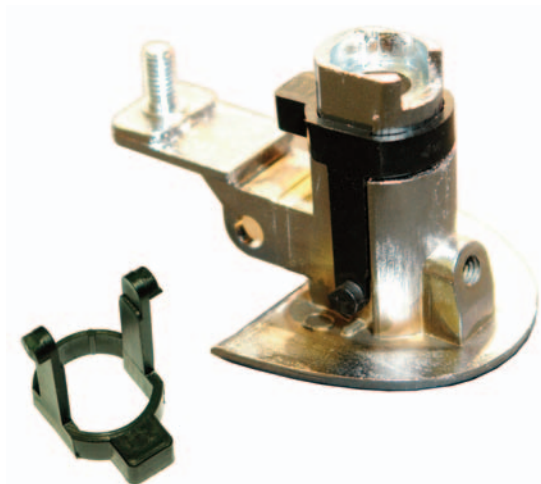
**PN: B914 531 813 10 LEFT MSRP: \$44.00
PN: B914 531 814 10 RIGHT MSRP: \$44.00
WHOLESALE: 10: EITHER SIDE \$290.00**

WINDOW REGULATOR REPAIR

Wonder why your 1970-72 side window suddenly comes crashing down? The window regulator button is worn and has come loose from the regulator lifting pin. Secure it now with a fresh new regulator button. Never available by itself, we have solved the problem with this high quality part. Guaranteed for life!

PN: B914 WRP ... MSRP: \$14.50 ... WHOLESALE: 10: \$90.00





914 EXTERIOR DOOR LATCH CAM

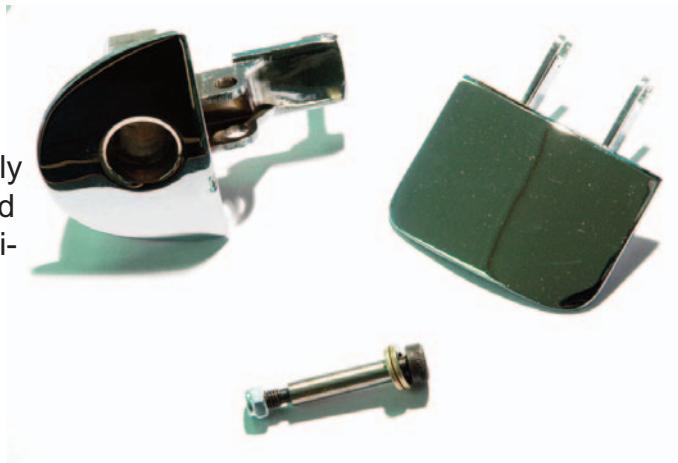
This was the first part we ever made way back in the early 80s. Made from Nylon Eleven, this part replaces the often broken and never available factory part that, when broken, renders the exterior door latch inoperable! Guaranteed for the life of the original owners car, this part is wildly popular!

**PN: B914 531 905 C ... MSRP: \$13.20
WHOLESALE: 50: \$200.00**

914 DOOR LATCH BASE OR FLAP KIT

Never available separately at the factory this heavily chromed piece has been redesigned and reinforced in the appropriate areas where the original part typically broke. Comes complete with a new, easily installed allen rivet.

**PN: B914 531 905/906 00, FLAP KIT
MSRP: \$99.00 ... WHOLESALE: 10: \$350.00
PN: B914 531 905 B, BASE KIT
MSRP: \$49.50 ... WHOLESALE: 10: \$350.00**



REAR CAP FOR SIDE WINDOW

Exposed to the elements for years, these left and right pieces crumble leaving a void at the rear of the side glass and always the question, "What goes there?" Problem solved with our perfect reproduction and perfect end to the squeek.

**1973-76 914:
PN: B914 542 173 10 LEFT ... MSRP: \$23.50
PN: B914 542 174 10 RIGHT ... MSRP: \$23.50
EITHER SIDE: WHOLESALE: 10: \$150.00**

--
**1970-72 914 + 914-6:
PN: B914 542 111 10 LEFT ... MSRP: \$29.50
PN: B914 542 112 10 RIGHT ... MSRP: \$29.50
EITHER SIDE: WHOLESALE: 10: \$195.00**



914 CENTER SEAT CUSHION

Fits the center tray perfectly and exactly matches the black interior vinyl. This is a superior part nicely padded and felt covered underneath and molded for a precise fit.

**PN: B914 521 053 09 ... MSRP: \$43.45
WHOLESALE: 4: \$140.00**

914 RADIO FACE PLATE

Allows installation of a modern radio into the 914 dash.
Made of heavy steel and covered in factory match vinyl,
the plate is a perfect match to the dash.

PN: B914 552 040 10 (1970-74)

MSRP: \$27.50 ... WHOLESALE: 5: \$75.00

PN: B914 552 444 10 (1975-76)

MSRP: \$27.50 ... WHOLESALE: 5: \$75.00

1975-76



1970-74



914 EXTERIOR MIRROR GASKET

No longer available from the factory, this perfectly reproduced part is critical when mounting the exterior mirror to the door. Made from nylorized rubber for extra long life.

PN: B914 731 116 10 ... MSRP: \$4.95

WHOLESALE: 20: \$60.00

914 DASH TO W/S BEAD SEAL

Excellent reproduction with molded ends for a perfect fit.

PN: B914 552 263 10

MSRP: \$39.50 ... WHOLESALE: 10: \$290.00



VISOR CLIP

We were aghast at the outrageous factory prices for these parts and just when our stomachs settled down and about got used to the prices, they discontinued these pieces! Perfect fit visor clips use your existing pins.

LEFT DRIVERS: B911 731 323 41 ... MSRP: \$19.50

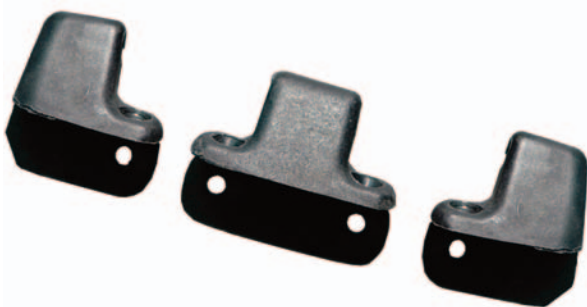
WHOLESALE: 10: \$120.00

CENTER: B914 731 327 10 ... MSRP: \$31.28

WHOLESALE: 10: \$180.00

RIGHT PASSENGER: B911 731 324 41 ... MSRP: \$19.50

WHOLESALE: 10: \$120.00



914 CENTER CONSOLE

This is an exact duplicate of the popular 2.0 console but manufactured from thicker wood for extended life. Console gauge plate is cut for the aftermarket

2 1/16 gauges so you may supply your customer with any gauge he desires! Gauges not included.

PN: B914 559 402 10 ... MSRP: \$214.50

WHOLESALE: 4: \$700.00



SEAT ADJUSTER LOOP

Our perfect replacement for the broken adjuster loop and guaranteed for the original owner's life of his 914, this part is easily installed.

PN: B914 521 029 10 / MSRP: \$16.50

WHOLESALE: 20: \$150.00



FRONT AND REAR CARPET KIT

Our trunk recarpeting kit is made of the original charcoal needle felt carpet and is an excellent alternative to the expensive non-molded factory part.

REAR TRUNK CARPET ... B914 551 511 00

MSRP: \$71.50 ... WHOLESALE: 6: \$180.00

FRONT TRUNK CARPET (2 PIECE KIT) ... B914 511 000 00

MSRP: \$27.50 ... WHOLESALE: 6: \$90.00

BETTER THAN FACTORY LEFT DOOR POCKET

Why didn't the factory make them this way to begin with? By now yours is well warped and ill fitting and with no good used available and new discontinued where does one go? Our fiberglass perfect fit, lined and covered with factory original black vinyl is the perfect solution. You will love it and the concours judges will never find out!

PN: B91455502100 ... MSRP: \$115.50

WHOLESALE: 3: \$285.00



STEERING COLUMN BASE

Missing from most 914-6 restoration projects these days are these steering column to dash frames. A nice detail the Porsche factory insisted upon, no dash is complete without these!

PN: B914 552 241 10 ... MSRP: \$19.50

WHOLESALE: 4: \$48.00

(2 REQUIRED PER CAR)



914 2.0

914 2.0 DECAL

Exact duplicate of the original no longer available factory part, this easily installed decal is mandatory for late 1975 and all 1976 models for concours perfection and an inexpensive way to install the script on any model 914.

PN: B914 559 293 11 ... MSRP: \$32.45

WHOLESALE: 6: \$90.00



914 CHROME LETTERING KIT

Just like the original plastic sets installed on all 1973-76 914 models, these highly chromed letters come with the clips and lettering installation grid. Don't over torque the nuts or the pegs will break!

PN: BPNA 559 901 00 ... MSRP: \$65.00

WHOLESALE: 10 SETS: \$390.00

914 ENGINE INSULATOR PAD

This is made from the latest waterproof and sound deadening materials and provides twice the sound deadening and heat insulating qualities of the original no longer available part. Easily installed part comes with complete installation instructions and will pass the strictest concours inspection! Great addition to the 1970-72 models that did not have an insulator pad installed at the factory.

PN: B914 556 135 10 ... MSRP: \$192.50

WHOLESALE: 4: \$600.00



914 TARGA TOP REAR SEAL

Attached to the rear of the targa top, this high quality reproduction seal should last even longer than the no longer available original.

PN: B914 563 077 11 ... MSRP: \$95.00

WHOLESALE: 10: \$550.00



914 VERTICAL ROLL BAR SEAL

This is the seal on the front of the roll bar that seals the rear vertical surface of the side glass. Easily installed and cut slightly longer to compensate for body sag on some vehicles.

PN: B914 531 143 10, LEFT SIDE / MSRP: \$38.50

WHOLESALE: 10: \$250.00

PN B914 531 144 10, RIGHT SIDE / MSRP: \$38.50

WHOLESALE: 10: \$250.00

SUNROOF RELEASE HANDLE

Missing your 944 latch handle and Porsche is telling you that it's going to cost \$179 to replace the little silly piece of plastic? Buy our excellent repro for much less!

PN: B477 871 217 ... MSRP: \$29.50

WHOLESALE: 10: \$180.00

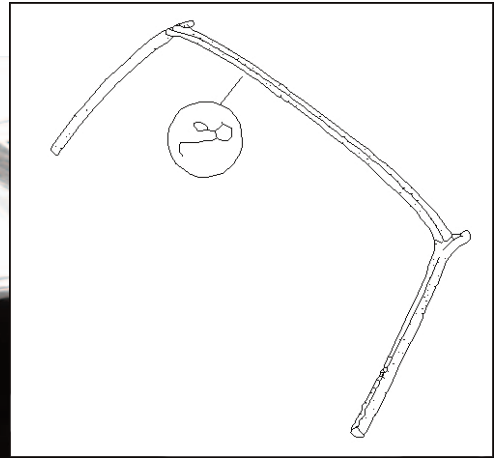


WINDSHIELD TOP SEAL

Beautiful better than factory windshield top seal is a perfect fit every time. Discontinued by the factory we spent tens of thousands to reproduce this vital seal.

PN: B914 563 039 10 ... MSRP: \$199.50

WHOLESALE: 10: \$1250.00



FUSE BOX COVER

Often missing from the 914 as too many left knees have knocked and broken it, more plyable reproduction is a perfect fit!

PN: B914 612 316 10 ... MSRP: \$29.50

WHOLESALE: 10: \$150.00



914 SIDEMARKER SEAL

Never individually available at the factory, completes a total weatherstrip replacement! Fits perfectly on the sidemarket base for a tight water seal.

PN: B914 631 405 06 ... MSRP: \$8.80

WHOLESALE: 10: \$55.00

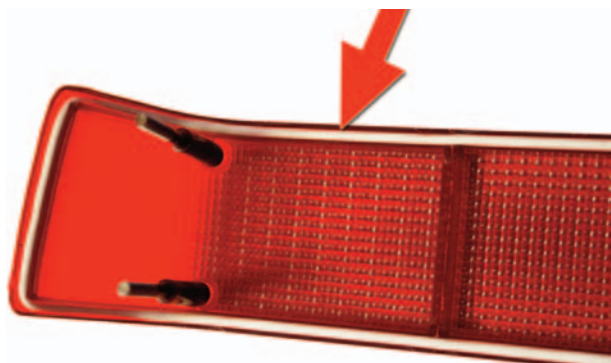


914 FRONT TURN SIGNAL SEAL

This replaces the expensive factory issue at a fraction of the cost.

PN: B914 631 957 10 ... MSRP: \$11.00

WHOLESALE: 10: \$80.00

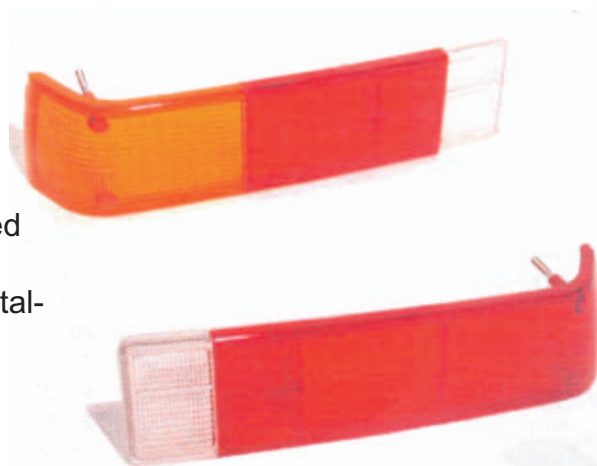


914 REAR TAILLIGHT LENS SEAL SET

Never available at the factory, these perfect repro parts seal the taillight lens to the body and are easily installed.

PN: B914 631 939 00 ... MSRP: \$16.50 (2)

SET: \$10.00 ... WHOLESALE: 10 SETS: \$80.00



914 REAR TAILLIGHT LENSES

Finally! Replacement taillight lenses for the discontinued factory issue! These exact copies are indistinguishable from the factory variety and are now available in clear Italian as well! The new one piece design makes these lenses stronger than the originals as well.

MSRP: \$199.00/SET OF TWO

WHOLESALE: 10 SETS: \$1500.00

USA LEFT.....B914 631 939 11

USA RIGHT.....B914 631 940 11

EURO LEFT.....B914 631 949 10

EURO RIGHT.....B914 631 950 10

ITALIAN LEFT.....B914 631 949 11

ITALIAN RIGHT.....B914 631 950 11



914 BLOWER BOX SEAL

Often overlooked during restorations, this necessary seal prevents water from leaking into the front trunk ventilation gas tank compartment. This is a molded part and therefore an exact fit to the 914 blower box screen and box.

PN: B914 571 129 10

MSRP: \$25.00

WHOLESALE: 10: \$180.00



FRONT TURN SIGNAL LENSES

Available in Amber USA, Clear Italian or Dark Amber and White Euro variety, these cannot be distinguished from the originals!

PN: B914 631 934 11 ... USA ... MSRP: \$24.75

WHOLESALE: 10: \$190.00

PN: B914 631 936 12 ... ITALIAN ... MSRP: \$47.25

WHOLESALE: 10: \$250.00

PN: B914 631 937 10 ... EURO ... MSRP: \$27.50

WHOLESALE: 10: \$190.00

AUTOMOBILE ATLANTA

505 SOUTH MARIETTA PKWY
MARIETTA, GA 30060
770-427-2844

HOURS OF OPERATION:
9:00 A.M. - 7:00 P.M. MONDAY - FRIDAY,
9:30 A.M. - 4:00 P.M. SATURDAY

**770-427-2844 800-792-4944
TO PLACE AN ORDER**

PLACE YOUR ORDER ON THE INTERNET:
WWW.AUTOATLANTA.COM



If you're an owner of the popular targa-topped, mid-engined 2-seat Porsche 914 or 914/6, then there's a book that you shouldn't be without.

• Tom Wilson, Technical Editor, Road & Track, July 1996

TECH TIPS 700 BY THE DOCTOR

**NO 914 OWNER SHOULD
BE WITHOUT IT**

After years of research it's finally here! Everything you ever wanted to know about your 914 and many things you didn't. Knowledge accumulated over many years in a handy guide that fits in your owner's manual cover. Over 700 technical tips as well as chronic ills and many other secrets all revealed by The Good Doctor. Avail today, in its third printing, for only \$19.50.

**TECH TIPS 700 ... RBK 7074 ... MSRP: \$19.50
WHOLESALE: 24: \$240.00**

924/944 TECHNICAL TIPS BY GEORGE A. HUSSEY IV

After years of research it's finally here! Everything you ever wanted to know about your 924/944 and many things you didn't! Knowledge accumulated over many years in a handy guide that fits in your owner's manual cover. Hundreds of technical tips as well as chronic ills and many other secrets all revealed by The Good Doctor. Don't wait! Avail today for only \$19.50.

**TECH TIPS 924/944 ... RBK 7075 ... MSRP: \$19.50
WHOLESALE: 24: \$190.00**



This book is a must have for any 924 or 944 enthusiast. Add it to your library or keep it in the toolbox for handy reference.